



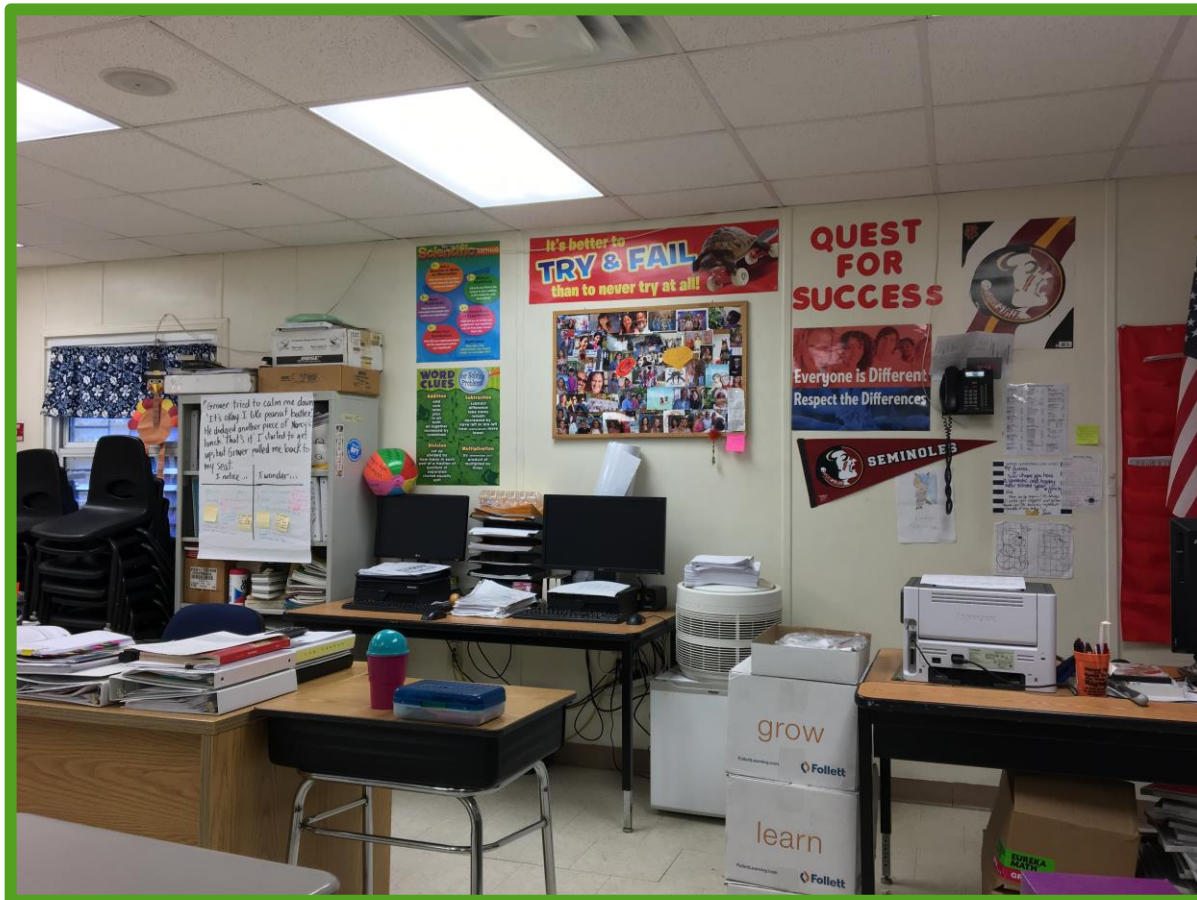
Fire and Site Safety 2022-2023

Clutter!


- ▶ Clutter is a big safety item that needs to be addressed. Because a cluttered room will not be cleaned properly, harbors pests and can block egress routes.



Wall Coverings By Textiles.
Schools with no fire sprinklers in classroom can only
have 20% on walls.



Rugs need to meet Class 1 Fire Safety rating. No residential rugs in BPS Facilities.



Lakeshore
LEARNING MATERIALS

Important Cleaning Instructions

Congratulations on the purchase of your new carpet! You've made a wise investment, and we want to do everything we can to make sure your carpet retains its good looks for years to come. To keep your carpet looking its best, you **MUST** follow these guidelines.

Steam Cleaning is the best way to clean your carpet. Many professional services are available to clean your carpet for you. Professionals should be sure to follow these basic rules:

- Water temperature must not exceed 150°F.
- Any cleaning solutions used must be neutral (pH of 7.0).
- **DO NOT OVERSATURATE.**
- Hang or lay flat and allow **PLENTY** of time to dry.

Dry Cleaning is the next best way to clean your carpet. It's easy and inexpensive. If you need recommendations for dry-cleaning products, call Customer Service.

Note: Traditional shampooing and self-service steam cleaners should **NOT** be used.

Helpful Hints:

- Vacuum carpet daily.
- Clean carpet at regular intervals (before dirt is visible).
- Spot-clean high-traffic areas between overall cleanings.
- Electric floor polishers can be very hard on the bindings of the carpet; move the carpet out of the way before polishing the floor.

Meets Class I rating of the National Fire Protection Association's "Life Safety Code®" (NFPA 253) and fire-resistance standards of the Uniform Building Code.

© Lakeshore • www.lakeshorelearning.com Made in U.S.A. For Customer Service, call (800) 428-4414

Aftermarket spray on Fire Retardants are **NOT** allowed for use on BPS Facilities.



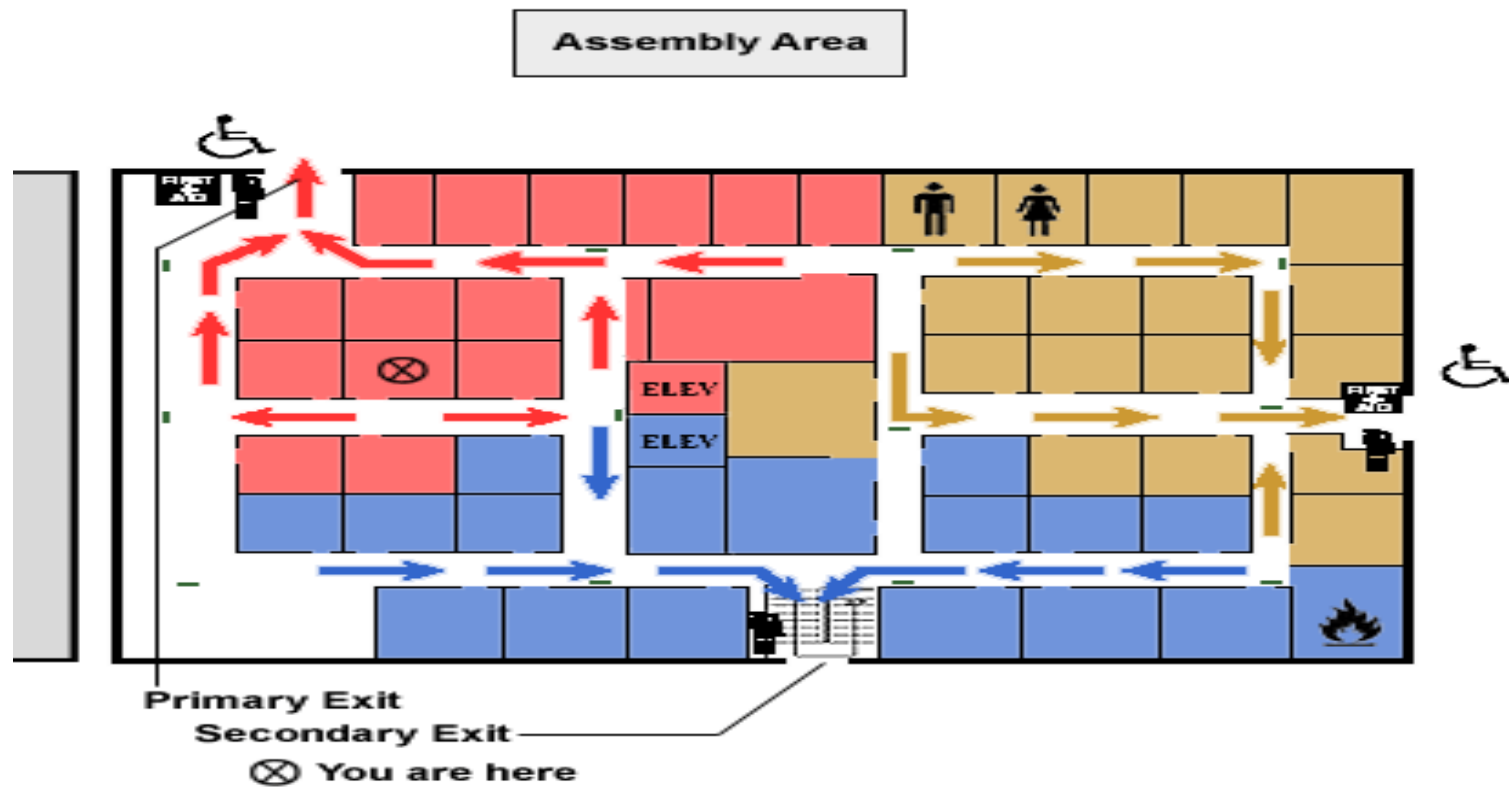
No Home Furniture, Beanbags, or Tents



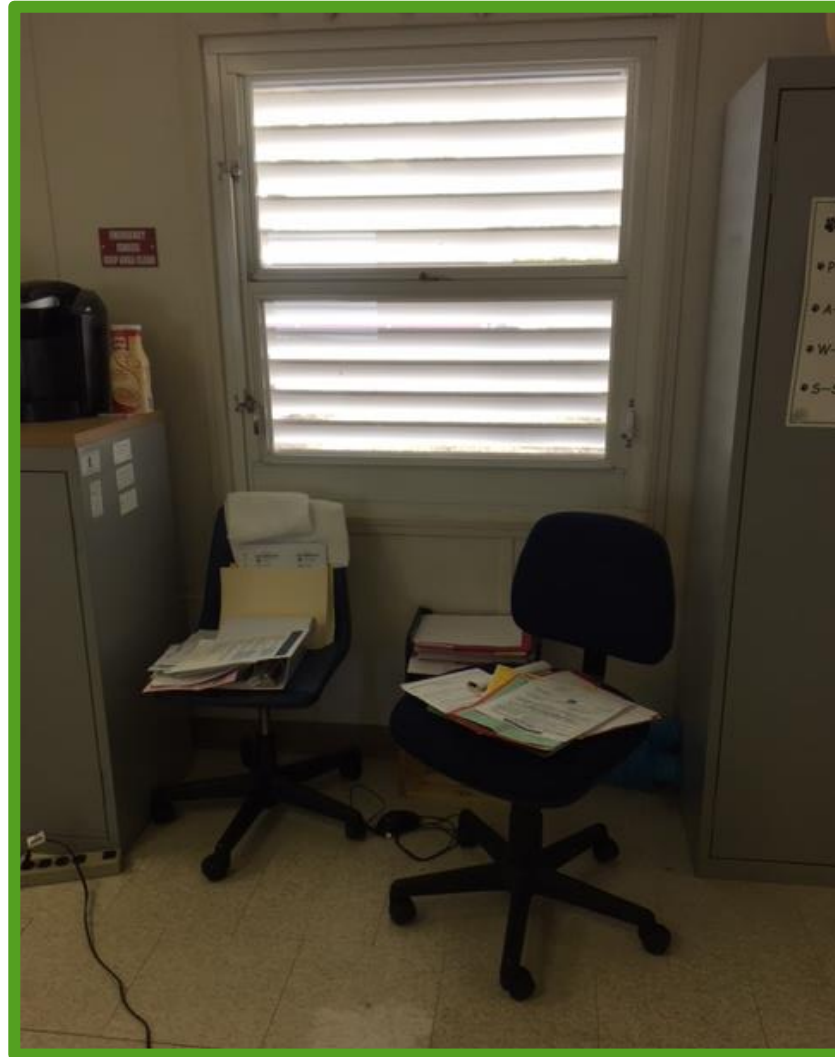
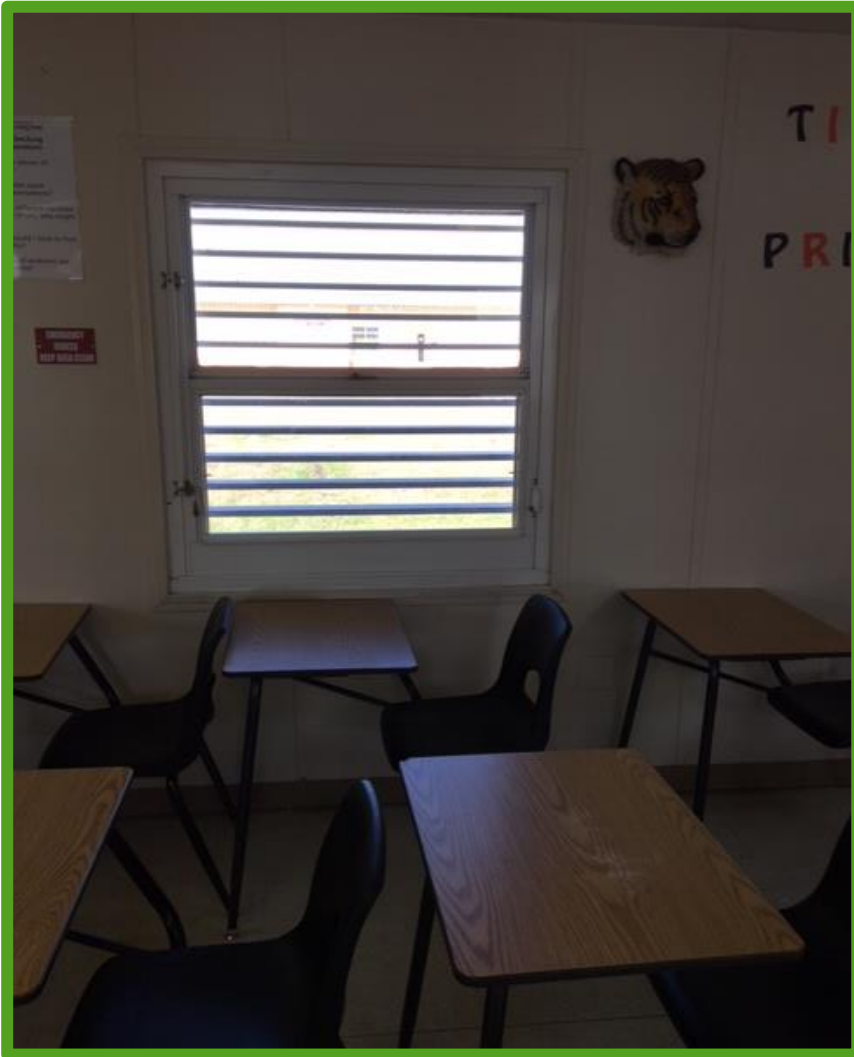
Do Not accept donations of paints or hand sanitizer.



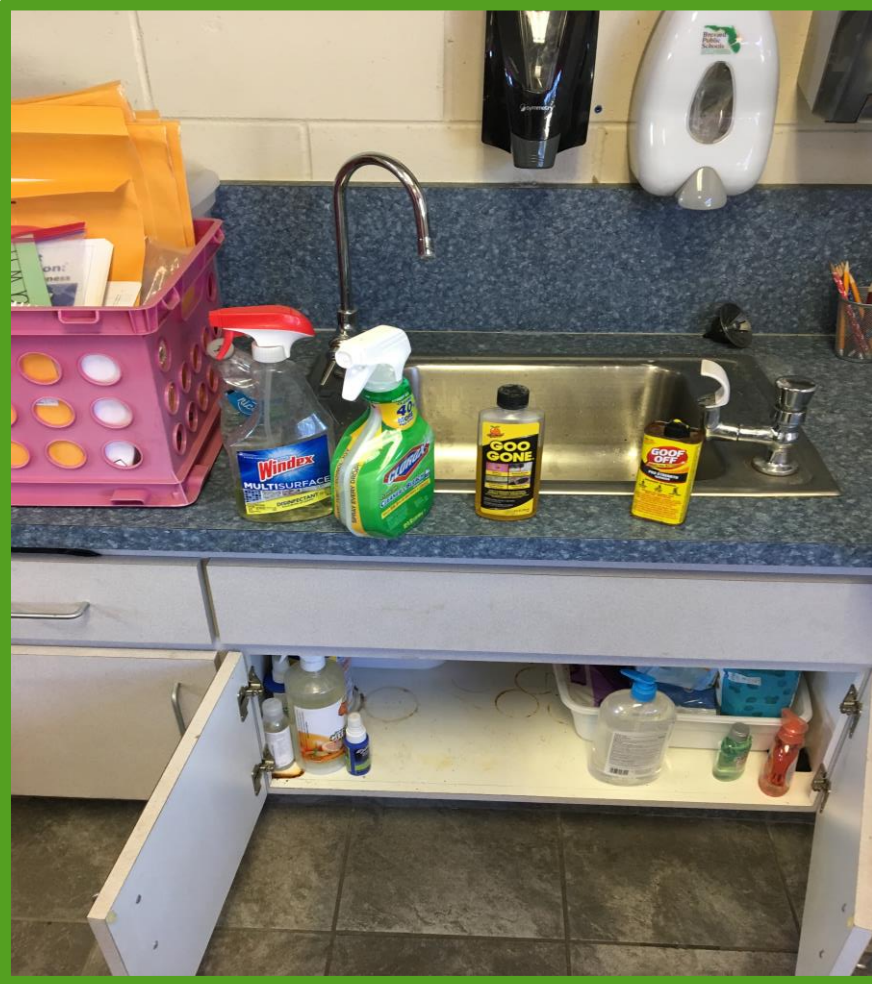
Evacuation map posted at exits.
Primary and secondary routes should be two contrasting colors along with being room specific.



Blocked Emergency Exits



Only use approved cleaners at BPS facilities.



Indoor Air Quality

Hides odors and can cause respiratory irritation.

Can not use these items at BPS Facilities.



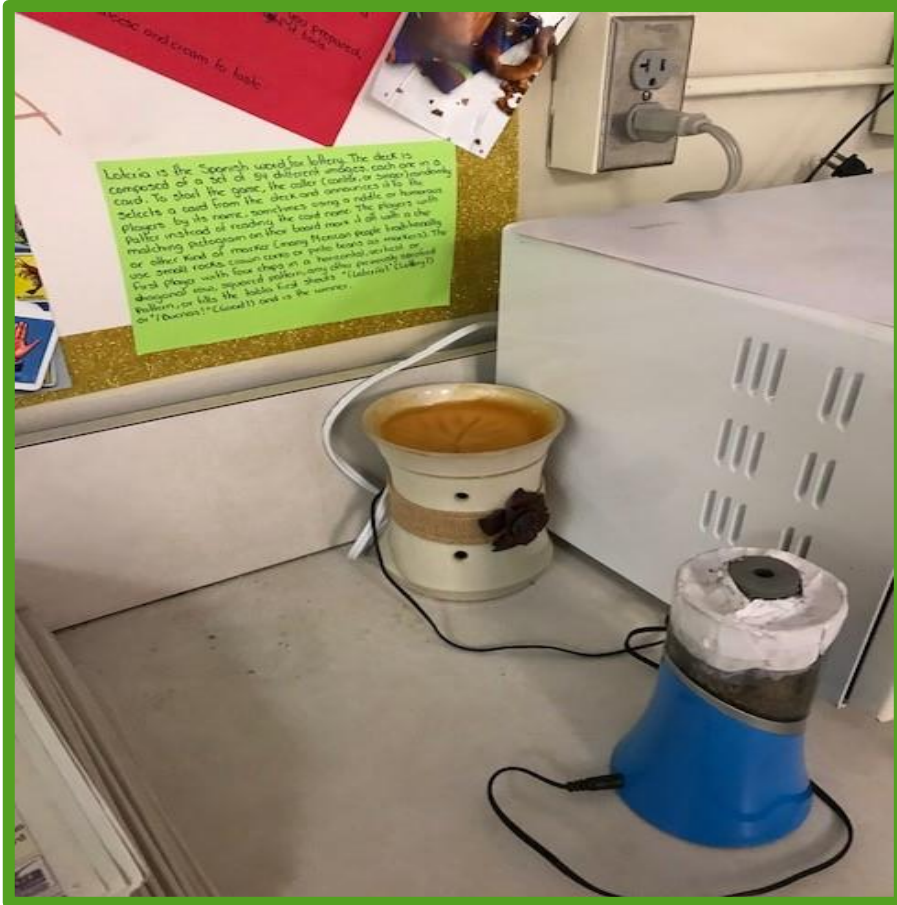
Plug In Type



Automatic Sprayers



Candle Warmer



Perfumes And Body Sprays



Items not allowed in classrooms

- ▶ Residential electrical cords have no ground. Use power strips only and **DO NOT** Daisy Chain them.
- ▶ Coffee pots can not be used in classrooms. They can burn students and are frequently left on.
- ▶ Microwaves and toaster ovens should be only used in break rooms.

Purses and handbags need to be locked
in a secure place.



Thank You For Your Dedication

